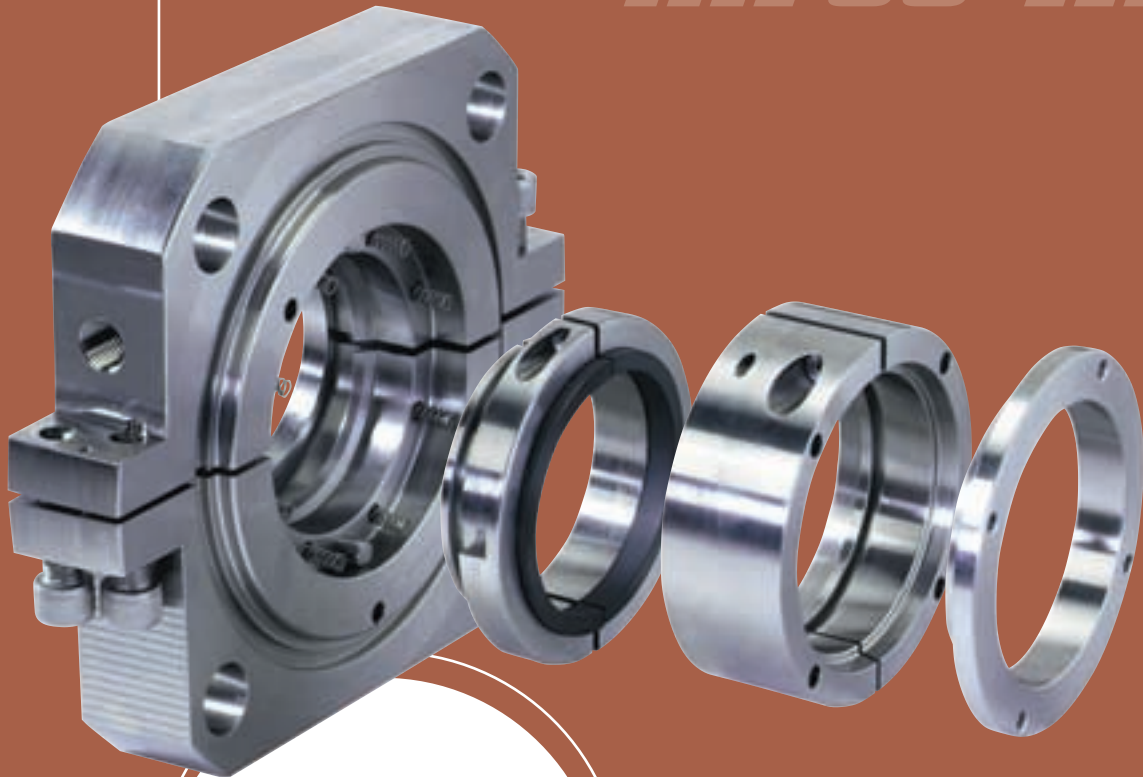


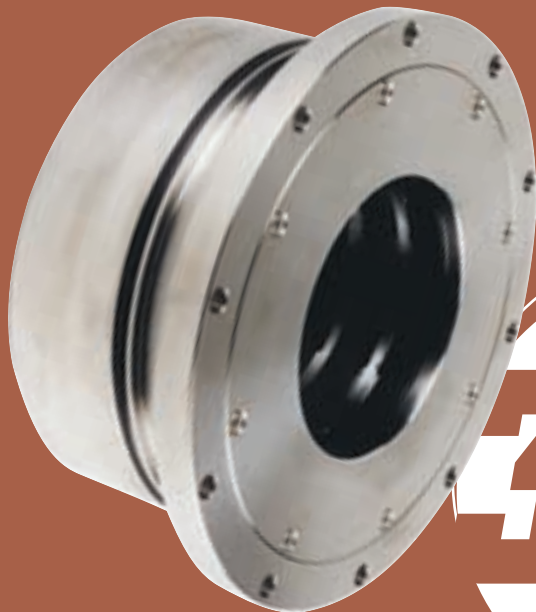
TYPE

two-fifty

three-fifty



250



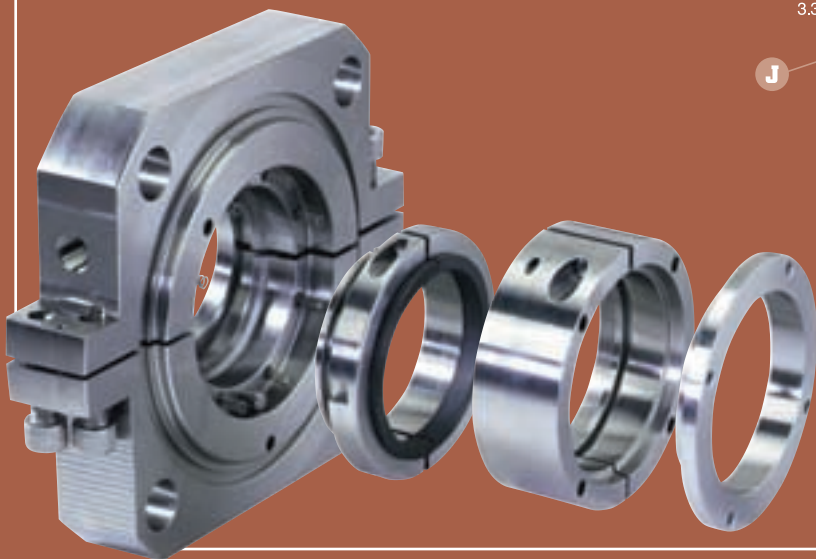
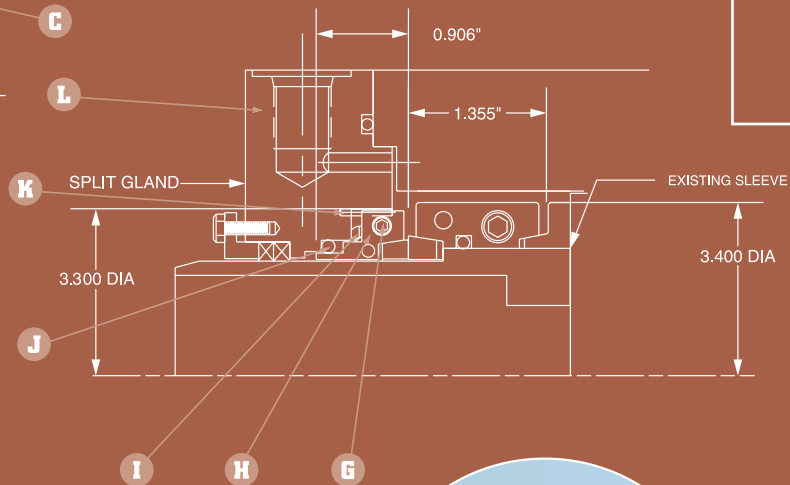
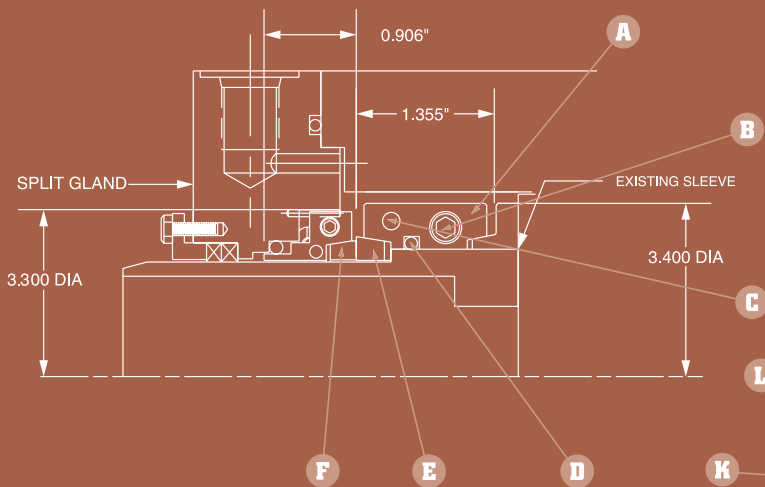
350

SPECS

type 250 Split Mechanical Seal

Description		Description	
A	Carrier	G	Screws
B	Screws	H	Seal Carrier
C	Dowel Pin	I	Wave Spring
D	O-Ring	J	O-Ring
E	Mating Ring	K	Drive Pin
F	Seal Face	L	Face Carrier

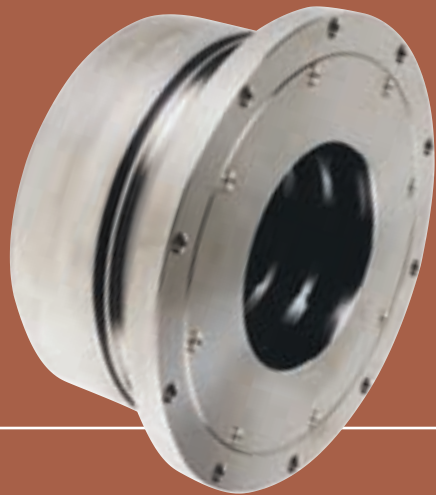
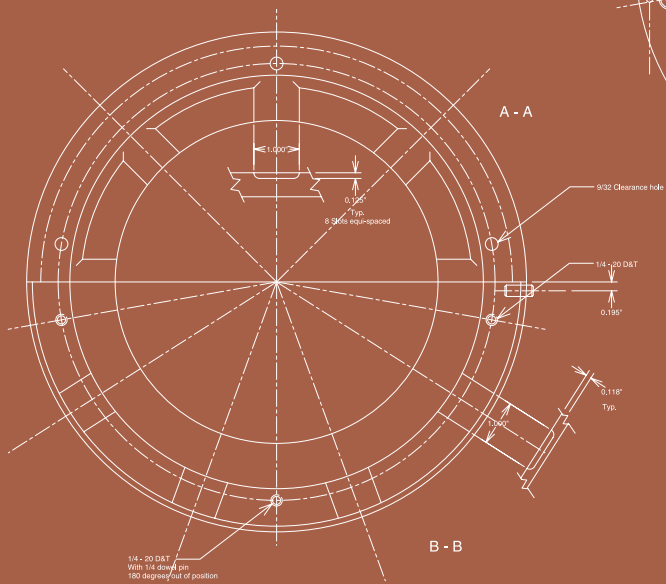
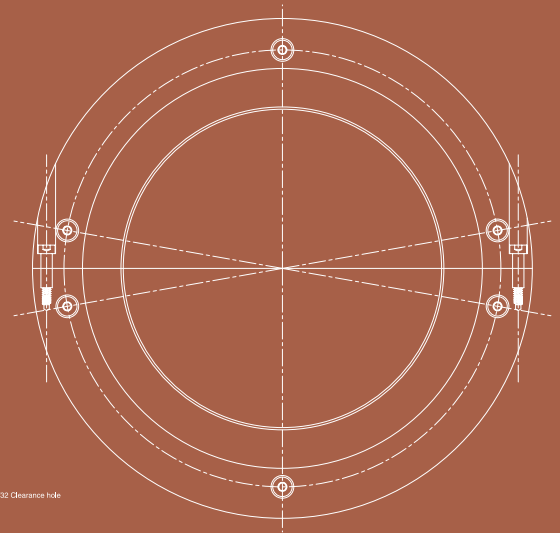
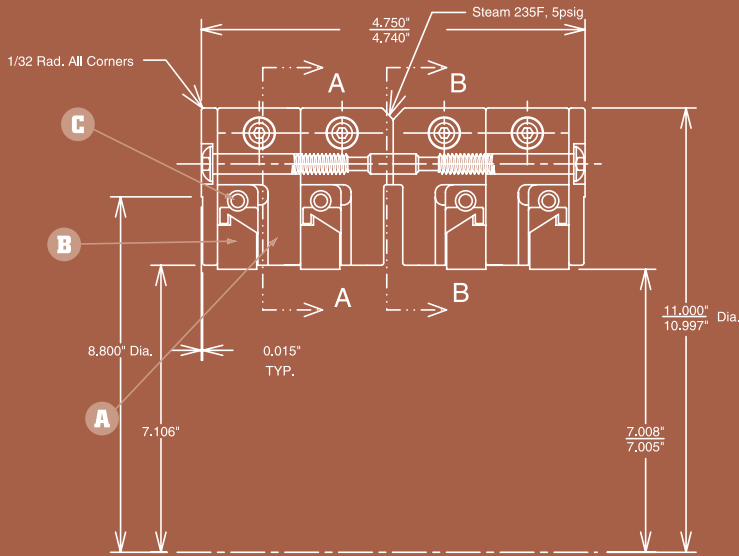
Typical Materials of Construction		
Housing	316 Stainless Steel, 303 Stainless Steel, Inconel 625, Hastelloy B ...other materials	L
Elastomer	Viton® (Fluorocarbon), Kalrez® (Perfluoroelastomer) Nitrile, EPDM ...other materials	D J
Clearance Rings	Carbon Graphite ...other materials	
Spring	302 SS, 316 SS, Elgiloy 17-7 PH ...other materials	I
Mating Ring	316 SS, 440 C SS Tungsten Carbide, Silicon Carbide, Ni-Resist, Ceramic ...other materials	E
Face Carrier	316 Stainless Steel, 303 Stainless Steel, Inconel 625, Hastelloy B ...other materials	A H



250 · 350

type 350 Shaft Clearance Seal

Typical Materials of Construction		
Housing	316 Stainless Steel, 303 Stainless Steel, Inconel 625, Hastelloy B ...other materials	A
Clearance Rings	Carbon Graphite ...other materials	B
Spring	302 SS, 316 SS, Elgiloy 17-7 PH ...other materials	C



hydro-ergoseal

Company Information



Location:

HYDRO-ERGOSEAL, INC.

1040-D National · Addison, IL 60101

Contact:

John Hilaris

{630} 543.2727 tel · {630} 543.7374 fax

HYDRO-ERGOSEAL, INC.

...is dedicated to producing the highest quality Mechanical Seals for Industrial, Marine and Aircraft applications.

Support Services:

- Application engineering
- Functional analysis, related reports and recommendations for application improvements
- Seal repair and replacement services
- Hydro-Ergoseal will maintain agreed upon inventories of special products when unpredictable emergency requirements frequently occur.
- Many more...

John A. Hilaris,
President and CEO

